





ABOUT

Interno doors by Alumil in alignment with the imperatives of contemporary architectural design and technological evolution, presents the Aluminium Entrance Door Series, **ZEN**.

The entrance to your home mirrors your sensations and creates a first and lasting impression.

The series creates new horizons for modern residential design, by providing versatility and customization, simultaneously adopting hi-tech and classic

materials, offering an exceptional aesthetic result, with top quality and advanced technology.

The minimal design of the system allows for the perfect integration of your Entrance Door to the residence façade, offering flexibility, functionality and exceptional performance.

Open the right one...
Open a **ZEN** door and glance to your dream house. Simplicity is bliss, and **ZEN** series is designed to make this motto a reality.

www.internodoors.com



INDEX

- PG. 06
- PG. 08
- PG. 10
- PG. 12
- PG. 16

- Z • CARBON
- Z • ENGRAVE
- Z • BASE
- Z • GLASS
- Z • WOOD

ZEN



TECHNICAL CHARACTERISTICS

- Frame profile width 95 mm
- Sash profile width 95 mm
- Sash mechanism weight up to 180kg
- Special anti-distortion glass reinforced 34mm polyamide with polyurethane core
- Continuous central gasket in the door sash for better water and air tightness resistance and for increased thermal insulation
- Standard 3-point lock
- Concealed hinges

PERFORMANCE

- Thermal insulation coefficient $U_f = 1,68 \text{ W/m}^2\text{K}$
- U-Factor: $U_d < 0,87 \text{ Wm}^2 / \text{K}$
- 3 Levels of waterproofing (3 gaskets)
- Air tightness: Class 3
- Water tightness: Class 3
- Resistance to wind load: 3A
- Security Level: WKII
- Sound proofing up to 45db

CONCELED HINGES



SEAL



3-level sealing, with the use of specially designed EPDM rubber gaskets with continuous central gasket at the door's sash offers a high level air tightness, waterproofing and insulation.

Advanced water drainage system for extreme weather conditions.

THERMAL INSULATION

The system uses special anti-distortion polyamides that provide a thermal break for the system, which in combination with the polyurethane core insert achieve optimal thermal insulation. In addition, the polyamides minimize the operational problems and accommodate the deflection of the door due to the temperatures difference between inside and outside.

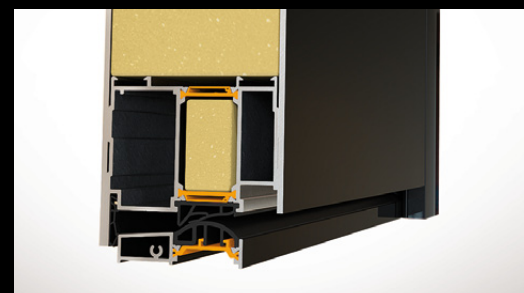


Model Z-Glass
• With 1 fixed sash
• Frame & Handle in Black Anodizing 103520
• Surface finished with White Glass



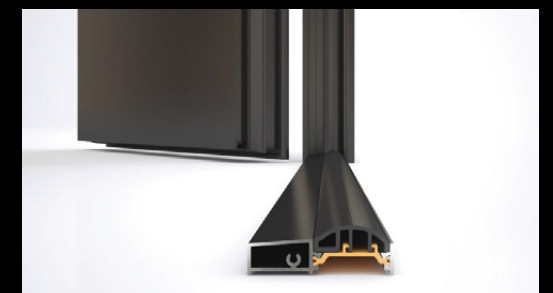
SECURITY

Standard 3-point lock. ZEN is also available with an electromagnetic lock version. Feel free to select the lock type and the access control system that suits to your needs either through a 'finger scanner' or via a wireless keyboard.



ACCESS

Low threshold that provides easy to access to and from the interior, suitable for people with disabilities.



Z-CARBON PIVOT

Z-CARBON

A novelty of **Alumil Group**, which utilizes carbon fiber sheets, for the first time in architectural applications, after aerospace and automotive engineering amongst other.

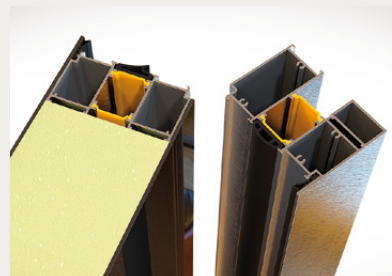
Innovation and optimum aesthetic and performance levels, characterize the system giving a unique result.

It is not by chance that Carbon fiber is considered "the new black" in modish design, characterized by:

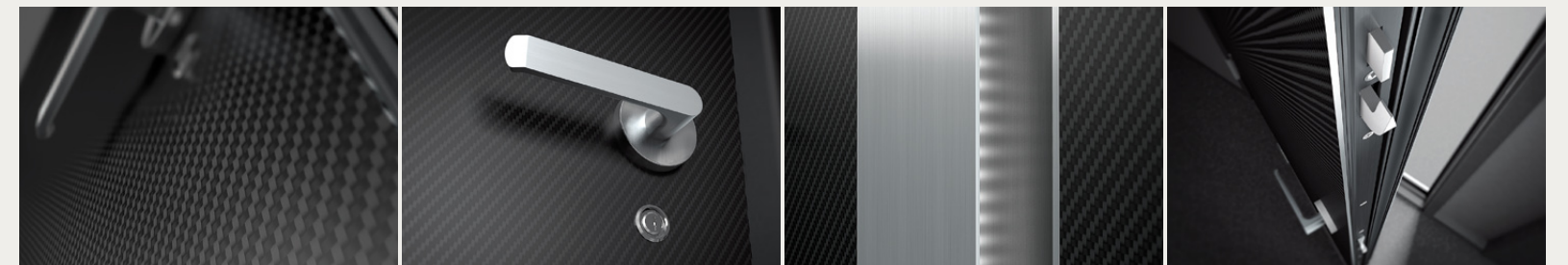
- astonishing weight-to-strength ratio
- energy absorbency
- unique texture



A LUXURY
YOU CAN'T
AFFORD
TO MISS



- Left image**
- Frame & Handle in Black Anodizing 103520
 - Sash in Carbon Fiber
- Right image**
- Fixed Sashes in Brushed Black Anodizing 103520
 - Opening Sash in Carbon Fiber
 - Flushed Handle Natural Anodizing 101020



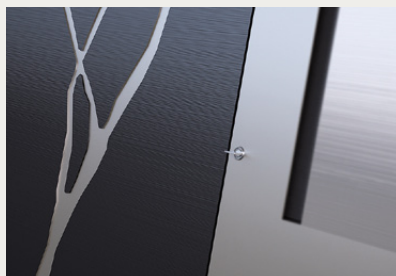


Z•ENGRAVE

Engrave your inspiration on the sash by customizing the design according to your aesthetic needs.

Select from a variety of brushed or polished anodizing colors, as well as any RAL, Sable or Wood Effect Finish. Enjoy the creation of coplanar Surfaces between Wall – Frame and Sash.

Z•Engrave allows for maximum versatility that will meet any aesthetic and or technological requirement.



CUSTOMIZATION



ENGRAVE YOUR PERSONAL STYLE

Left image

- Fixed Sash in Brushed Black Anodizing 103520 with Engraving
- Opening Sash in Sand Inox Anodizing 104660 and Satin Sand Anodizing 104620
- Flushed Handle in Black Anodizing 103520
- Behind Engravements in Satin Sand Anodizing 104620

Right image

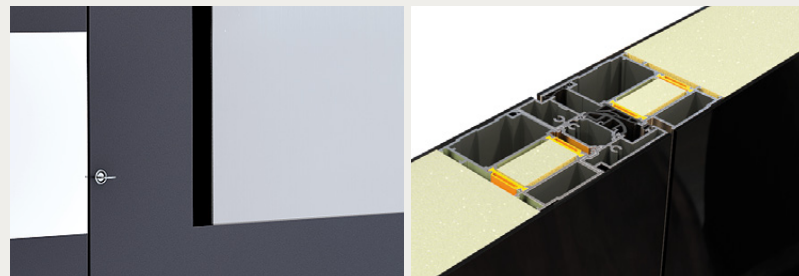
- Frame, Sash and Flushed Handle in Bronze Anodizing 103020
- Behind Engravements in Natural Anodizing 101020



Z·BASE

Express your selves colorfully and enjoy the harmony of simplicity, by selecting amongst a wide variety of anodizing, Sable or Ral colors that will realize the entrance that you vision.

ENJOY
THE HARMONY
OF SIMPLICITY

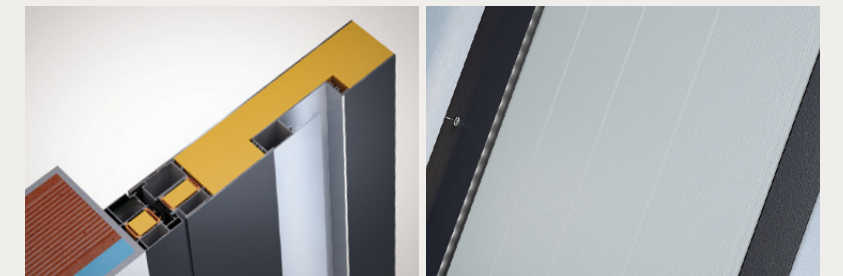


Left image

- Fixed and Opening Sash in combination of Grey Anodizing and Platinum Anodizing 304560
- Frame and Handle in Black Anodizing 103520

Right image

- Sash with Vertical Alignment in Gris 2800 Sable
- Frame and Flushed Handle in Burn 2650 Sable



• Finished in Black Structural Glass and Natural Anodizing 101020

Z•GLASS

Z•Glass models offer the purity of glass in combination with metal aluminium finishes, at the coloring of your choice. Simple and modern at the same time. Z•Glass may reflect your taste by selecting among various glazing options.

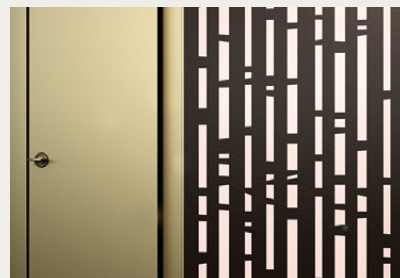




Z·GLASS

Structural transparent glass, allows for natural light enrichment of the inner environment while directly connecting it with the outer.

Variety of glazing options in terms of patterns and textures.



REFLECTIONS

Left image

- Frame and Sash in Honey Satin Anodizing 104720
- Imprinted Colored Glass

Right image

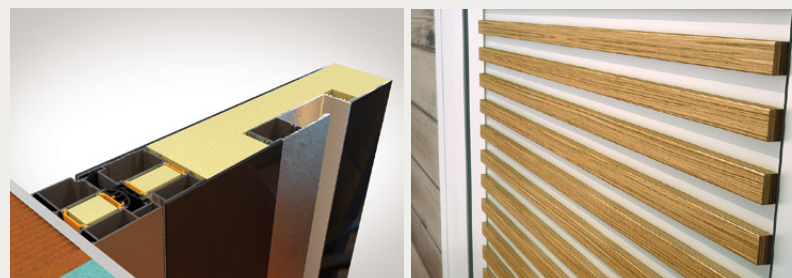
- Sidelites in Transparent Structural Glass
- Opening Sash in White Grazalema 2525 Sable
- Handle and middle area in Natural Anodizing 101020





Z·WOOD

Z-Wood combines harmoniously the temporal sensation of wood, with the minimal and modern style of aluminium.



Left image

- Frame Sash and Handle in Natural Anodizing 101020
- Wooden Decorative elements in Oak 3103

Right image

- Fixed Sash and Handle in Brushed Black Anodizing 103520
- Wooden finishes in Oak 3111

CONTEMPORARY WARMTH

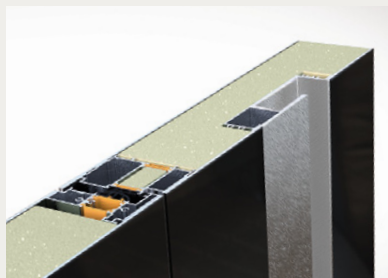




Z·WOOD

**ELEGANCE
DURABILITY
RELIABILITY**

The variety of materials and colors that enrich the series guarantees that you will definitely meet your aesthetic needs.



- Fixed Sash and Handle in Light Bronze Anodizing 102020
- Wooden finishes in Ebony Straight Grain



**OPEN
THE
RIGHT
ONE**

www.internodoors.com



ALUMIL SA

Business Unit Interno

IND. AREA of Kilkis

611 00 Kilkis, Greece

T +30 23410 79 444

F +30 23410 71 612

E interno@alumil.com

U www.internodoors.com



INTERNO
DOORS BY ALUMIL